

ROBERT LARSON COMPANY

2024 Catalog



Since 1981



CHISELS

Two Cherries Chisels are made of the highest quality German carbon steel. A perfectly balanced tool, where the blades are skillfully forged, then heat treated in an immersion bath to allow the blades to reach 61° on the Rockwell scale. This ensures a tool that will hold an edge longer than most chisels on the markets. After the heat treatment, the tools are polished to a mirror finish and then attached to the appropriate handle. Chisels are between 10" and 14" overall

WOODEN HANDLED CHISELS



PLASTIC HANDLED CHISELS



Chisels with classic round hornbeam handles.

500-1502	2mm
500-1503 1/8"	3mm
500-1504 3/16"	4mm
500-1506 1/4"	6mm
500-1508	8mm
500-1510 3/8"	10mm
500-1512 1/2"	12mm
500-1514	14mm
500-1516 5/8"	16mm
500-1518	18mm
500-1520 3/4"	20mm
500-1522	22mm
500-1524	24mm
500-1526 1"	26mm
500-1528	28mm
500-1530 1-1/4"	30mm
500-1532	32mm
500-1535	35mm
500-1540 1-1/2"	40mm
500-1545	45mm
500-1550 2"	50mm

WOODEN HANDLED SETS



Chisel sets in a beautiful fitted wooden box.

500-1559.....Set of 4 with 10, 16, 20 and 26mm Chisels
500-1561.....Set of 6 with 6, 10, 12, 16, 20, and 26mm chisels. This is our bestselling Chisel Set!

UNPOLISHED CHISEL SETS IN WOOD BOX



Produced with in the same method as all Two Cherries blades with the exception of the blade finish, unlike the standard Two Cherries chisels, these don't have the mirror finishing. Available only in sets fitted with wooden boxes.

500-9050.....Set of 4 with 10, 16, 20 and 26mm Chisels
500-9060.....Set of 6 with 6, 10, 12, 16, 20, and 26 mm Chisels

Chisels with tough cellulose acetate handles.

500-3502	2mm
500-3504 3/16"	4mm
500-3506 1/4"	6mm
500-3510 3/8"	10mm
500-3512 1/2"	12mm
500-3516 5/8"	16mm
500-3520 3/4"	20mm
500-3526 1"	26mm
500-3530 1-1/4"	30mm

CHISEL SETS WOODEN HANDLES



Sets in beautiful fitted wooden box.
500-1564.....Set of 4 with 10, 16, 20 and 26mm Chisels
500-1562.....Set of 6 with 6, 10, 12, 16, 20, and 26mm Chisels

SETS IN DISPLAY BOX



Sets in Two Cherries 12 pocket velour leather roll.
500-1570Set of 4 with 10, 16, 20 and 26mm Chisels
500-1575.....Set of 6 with 6, 10, 12, 16, 20, and 26mm Chisels

CHISEL SETS PLASTIC HANDLES



Plastic Handled set in a display box.
500-3564.....Set of 4 with 10, 16, 20 and 26mm Chisels
500-3562.....Set of 6 with 6, 10, 12, 16, 20, and 26mm Chisels

SET OF 4 BUTT CHISELS



Same high quality German blades, these chisels are small, about 6 1/2" for precise bench work in tight spaces such as door jams.

500-4575.....Set of 4 with 6mm, 12mm, 20mm and 26 mm



CHISELS AND GOUGES

Two Cherries produces a large selection of specialty chisels and gouges for tackling any project.

CURVED BEVEL EDGE CHISELS



An indispensable tool for any workshop, having an S shaped blade, the tools cut, trim, and pare in confined spaces. Reaching places that a traditional chisel cannot. Available in 3 useful sizes.

- 500-1710 10mm Curved Chisel
- 500-1716 16mm Curved Chisel
- 500-1720 20mm Curved Chisel

SWAN NECK MORTISE CHISELS



Use in conjunction with the Two Cherries Mortise Chisels for cleaning the bottom of a mortise joint. The curved blade allows for extra reach.

- 500-2106 6mm Swan Neck Chisel
- 500-2110 10mm Swan Neck Chisel
- 500-2112 12mm Swan Neck Chisel

HEAVY DUTY MORTISE CHISELS



An impressive, strong pattern tool for mortising, comes with a hefty round hornbeam handle that is fitted with a leather pad for shock absorption. The chisels are between 13" and 14" long providing great depth for cutting straight mortises in all types of wood.

- 500-2006 6mm Mortise Chisel
- 500-2008 8mm Mortise Chisel
- 500-2010 10mm Mortise Chisel
- 500-2012 12mm Mortise Chisel
- 500-2199 Set of all 4

SKEW BEVEL EDGE CHISELS



Bevel edge chisel with skewed cutting edges, comes in a pair with a right and a left angle tool. A practical set for trimming tenons, dowels or protruding dovetails, anyplace where finesse is needed.

- 500-1912 12mm Pair of Skew Chisels
- 500-1920 20mm Pair of Skew Chisels
- 500-1926 26mm Pair of Skew Chisels

DOUBLE SKEW BEVEL EDGE CHISELS



A unique pointed chisel with a double skew cutter edge and cranked handle that allows access to tight spots that cannot be reached with any other tool.

- 500-2312 12mm Pointed Chisel
- 500-2320 20mm Pointed Chisel
- 500-2326 26mm Pointed Chisel

CRANKED AND SKEW BEVEL EDGE CHISELS



Bevel edge chisel, with skewed cutting edges, and cranked handles, comes in a pair with a right and a left angle tool. This design will allow the most options for fine work.

- 500-1812 Pair of Skew and Cranked Chisels 12mm
- 500-1820 Pair of Skew and Cranked Chisels 20mm
- 500-1826 Pair of Skew and Cranked Chisels 26mm

GOUGES

These firmer gouges have a curved edge with either an inside bevel or outside bevel. Fitted with a high-quality wood handle. The quality of the steel and workmanship ensures exceptional edge retention and longevity. This tool is heavier than the normal carving gouges, but as with all Two Cherries tools, are still light and well balanced, due to the quality of the steel and workmanship. Overall lengths of approximately 10 to 11 inches, depending on width and equates closest to a 7 Sweep.

OUT CANNEL GOUGES



- 500-1006 6mm Out Cannel Gouge
- 500-1012 12mm Out Cannel Gouge
- 500-1020 20mm Out Cannel Gouge
- 500-1026 26mm Out Cannel Gouge

CURVED GOUGES



- 500-0906 6mm Curved Gouge
- 500-0910 10mm Curved Gouge
- 500-0920 20mm Curved Gouge
- 500-0926 26mm Curved Gouge

IN CANNEL GOUGES



- 500-1106 6mm In Cannel Gouge
- 500-1110 10mm In Cannel Gouge
- 500-1120 20mm In Cannel Gouge
- 500-1126 26mm In Cannel Gouge

PROBLEM SOLVER KIT



This set of 4 different tools fitted in a wooden box for tackling many jobs. The set includes a 4mm and 26mm bevel edge chisel, a 12mm out cannel gouge and 20mm curved S chisel. A fantastic set to take to a job when you cannot bring your whole shop.

- 500-1850 Problem Solver Set



DRAWKNIVES & SAWS

DRAWKNIVES



Each of the Two Cherries drawknives has a forged blade that is 1 5/16" wide, and 3/16" thick. Fitted with 4" wooden handles with a cutting angle of 25°.

- 500-1320 225mm Straight Drawknife
- 500-1325 250mm Straight Drawknife
- 500-1330 300mm Straight Drawknife
- 500-1375 250mm Curved Drawknife
- 500-1380 120mm Carver's Drawknife with Two Cherries Valore Sheath

INSHAVE



This 5mm thick, forged rounded blade is made for making deep cuts, and is especially useful for chairmaking and creating wooden bowls.

- 500-2210 Two Cherries Inshave

SCORP



A circular cutting tool with a 3 1/2" diameter, forged blade with 5mm thickness. For roughing out concave shapes.

- 500-2250 Two Cherries Scorp

VENEER SAW



Saw comes with an oval blade and offset handle. This saw will leave a 90° finish for perfectly joining two pieces of veneer.

- 520-2200 Veneer Saw
- 520-2210 Replacement blade only

DOVETAIL SAWS



Two Cherries Dovetail saws have 15TPI, cutting a 1.3mm kerf. Two Style options with 250mm saw blade. One is a straight saw for all around use. The other has an offset blade for making flush cuts and is reversible for greater access. All the saws have set and sharpened teeth. Optional brass bass for added stability.

- 520-2020 Straight Dovetail Saw
- 520-6020 Brass Back Straight Dovetail Saw
- 520-2080 Reversible Dovetail Saw
- 520-6080 Brass Back Reversible

CABINET SCRAPERS



Made of the finest quality German steel, a cabinet scraper leaves a superior finish compared to sandpaper. Available in multiple profiles for completing any project with an unsurpassed result.

- 520-5005 0.6mm Flexible Rectangle Scraper
- 520-5010 0.8mm Stiff Rectangle Scraper
- 520-5060 0.8mm Convex Concave Scraper
- 520-5070 0.8mm Gooseneck Scraper
- 520-5750 0.8mm Rectangle Scraper with filed and prepared edged, needing only a final burnish to be ready to use.

SCRAPER SETS



- 520-5510 Set of 3 Scrapers, 0.8mm Rectangle, Convex/Concave and Gooseneck.
- 520-5800 Set of 3 Scraper with Two Cherries Velour Case
- 520-5850 Set of 3 Scrapers and Round Burnisher in Two Cherries Velour Case

BURNISHER



Oval Burnisher

Triangular Burnisher

Round Burnisher

For sharpening scrapers, a burnisher is indispensable, and Two Cherries produces three different profiles. all are 9 1/2" overall with wooded handles.

- 520-5080 Oval Burnisher
- 520-5085 Triangle Burnisher
- 520-5090 Round Burnisher



WOOD WORKING TWO CHERRIES MULTI TOOL



1" wide tool that can perform a large variety of tasks due to the 3 1/2" cutting edge along one side. Those tasks include marking, cutting, notching, peeling mortising and scraping. A real DIY tool that would be useful to Boat Builders, Cabinet Makers, Drywall installers, Hardwood floor installers to name a few. Comes with a Two Cherries holsters with belt loop to always have it easily available.

500-5026 Multi Tool with Holster

ADZE HEADS AND HANDLE



Two Cherries offer 2 unhandled adze heads, A 3 1/2" flat cutting edge or a 2 1/2" curved cutting edge. Both weigh about 2.5 lbs.
500-1210 Flat Adze Head
500-1275 31" Handle

CORNER CHISEL



With inside bevels this tool easily cleans up after drilling or routing a mortise.
500-4050 12mm Corner Chisel

AWLS



A useful tool for any shop. Great for marking precisely where to drill, marking a line when used in conjunction with a ruler or even piercing small holes in thin material. Two lengths available with comfortable handle.
520-1050 Short Awl with 2 1/2" Blade
520-1060 Long Awl with 4 1/2" Blade

12 POCKET TOOL ROLL



Beautiful suede 12 pocket Two Cherries tool roll.
524-7200 Tool Roll

TWO CHERRIES BASEBALL CAP



Nicely made black baseball cap with Two Cherries Logo.
524-7300 Baseball Cap

SHOP APRON



Stay safe and stylish with a Two Cherries suede apron. Fully adjustable nylon wrist and neck straps featuring three deep pockets and rivets at the stress points.
524-7100 Two Cherries Apron

CARPENTER PENCIL



A pencil of the highest quality, with soft lead that is easily cut to a point.
524-7000 Carpenter Pencil

CHISEL EDGE GUARDS



Set of 6 different guards for a 6, 10, 12, 16, 20 and 26mm chisel.
500-1590 Chisel Guards Set



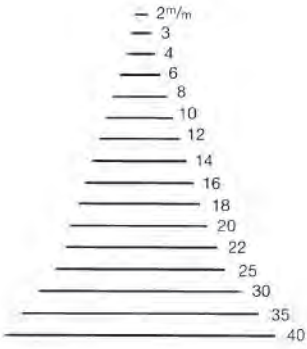
FULL SIZE OR PROFESSIONAL CARVING TOOLS



For over 150 years, the Two Cherries factory has been producing high quality carvings tools for carvers of every level. Today they make close to 1,000 different tools in much the same, traditional manner, with many parts of the production still being done by hand. The tools come factory sharp and ready to use.



SWEEP #1



- 505-0102 Straight Chisel02mm
- 505-0103 Straight Chisel03mm
- 505-0104 Straight Chisel04mm
- 505-0106 Straight Chisel06mm
- 505-0108 Straight Chisel08mm
- 505-0110 Straight Chisel10mm
- 505-0112 Straight Chisel12mm
- 505-0114 Straight Chisel14mm
- 505-0116 Straight Chisel16mm
- 505-0118 Straight Chisel18mm
- 505-0120 Straight Chisel20mm
- 505-0125 Straight Chisel25mm
- 505-0130 Straight Chisel30mm
- 505-0135 Straight Chisel35mm



- 505-0202 Skew Chisel02mm
- 505-0203 Skew Chisel03mm
- 505-0204 Skew Chisel04mm
- 505-0206 Skew Chisel06mm
- 505-0208 Skew Chisel08mm
- 505-0210 Skew Chisel10mm
- 505-0212 Skew Chisel12mm
- 505-0214 Skew Chisel14mm
- 505-0216 Skew Chisel16mm
- 505-0218 Skew Chisel18mm
- 505-0220 Skew Chisel20mm
- 505-0225 Skew Chisel25mm
- 505-0230 Skew Chisel30mm
- 505-0235 Skew Chisel35mm

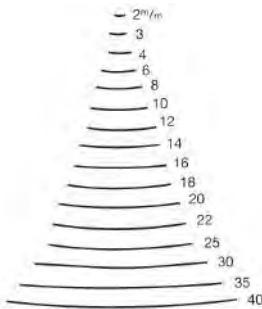


- 505-2103 Spoon Bent03mm
- 505-2106 Spoon Bent06mm
- 505-2112 Spoon Bent12mm
- 505-2116 Spoon Bent16mm
- 505-2118 Spoon Bent18mm



- 505-7102 Spade Chisel02mm
- 505-7106 Spade Chisel06mm
- 505-7110 Spade Chisel10mm
- 505-7112 Spade Chisel12mm
- 505-7116 Spade Chisel16mm

SWEEP #3



- 505-0302 Straight Gouge02mm
- 505-0303 Straight Gouge03mm
- 505-0304 Straight Gouge04mm
- 505-0306 Straight Gouge06mm
- 505-0308 Straight Gouge08mm
- 505-0310 Straight Gouge10mm
- 505-0312 Straight Gouge12mm
- 505-0314 Straight Gouge14mm
- 505-0316 Straight Gouge16mm
- 505-0318 Straight Gouge18mm
- 505-0320 Straight Gouge20mm
- 505-0325 Straight Gouge25mm
- 505-0330 Straight Gouge30mm
- 505-0335 Straight Gouge35mm

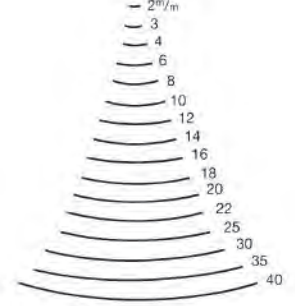


- 505-2404 Spoon Bent04mm
- 505-2406 Spoon Bent06mm
- 505-2412 Spoon Bent12mm
- 505-2416 Spoon Bent16mm
- 505-2418 Spoon Bent18mm



- 505-7304 Spade Gouge04mm
- 505-7308 Spade Gouge08mm
- 505-7316 Spade Gouge16mm

SWEEP #4



- 505-0402 Straight Gouge02mm
- 505-0403 Straight Gouge03mm
- 505-0404 Straight Gouge04mm
- 505-0406 Straight Gouge06mm
- 505-0408 Straight Gouge08mm
- 505-0410 Straight Gouge10mm
- 505-0412 Straight Gouge12mm
- 505-0414 Straight Gouge14mm
- 505-0416 Straight Gouge16mm
- 505-0418 Straight Gouge18mm
- 505-0420 Straight Gouge20mm
- 505-0425 Straight Gouge25mm
- 505-0430 Straight Gouge30mm
- 505-0435 Straight Gouge35mm



- 505-1306 Long Bent06mm
- 505-1310 Long Bent10mm
- 505-1312 Long Bent12mm
- 505-1314 Long Bent14mm
- 505-1316 Long Bent16mm
- 505-1320 Long Bent20mm
- 505-1322 Long Bent22mm
- 505-1325 Long Bent25mm



- 505-2504 Spoon Bent04mm
- 505-2506 Spoon Bent06mm
- 505-2512 Spoon Bent12mm
- 505-2516 Spoon Bent16mm
- 505-2518 Spoon Bent18mm

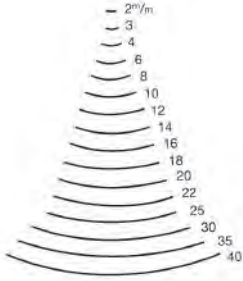
NUMBERING

Ordering carving tools can be confusing, so here is an explanation of the numbering system for our full size professional tools. All our tools have a seven digit number (XXX-XXXX). The first three digits for all professional carving tools is 505 (505-XXXX). The next two digits indicate the "sweep" of the tool (505-08XX). The last two digits indicate the width of the cutting edge (505-0812). The preceding example (505-0812) indicates a professional Two Cherries #8-sweep straight gouge with a cutting edge of 12mm. Note that the sweep illustrations are not shown to size.



FULL SIZE OR PROFESSIONAL CARVING TOOLS

SWEEP #5



- 505-0502 Straight Gouge 02mm
- 505-0503 Straight Gouge 03mm
- 505-0504 Straight Gouge 04mm
- 505-0506 Straight Gouge 06mm
- 505-0508 Straight Gouge 08mm
- 505-0510 Straight Gouge 10mm
- 505-0512 Straight Gouge 12mm
- 505-0514 Straight Gouge 14mm
- 505-0516 Straight Gouge 16mm
- 505-0518 Straight Gouge 18mm
- 505-0520 Straight Gouge 20mm
- 505-0522 Straight Gouge 22mm
- 505-0525 Straight Gouge 25mm
- 505-0530 Straight Gouge 30mm
- 505-0535 Straight Gouge 35mm



- 505-1406 Curved Gouge 06mm
- 505-1410 Curved Gouge 10mm
- 505-1412 Curved Gouge 12mm
- 505-1414 Curved Gouge 14mm
- 505-1416 Curved Gouge 16mm
- 505-1420 Curved Gouge 20mm
- 505-1422 Curved Gouge 22mm
- 505-1425 Curved Gouge 25mm

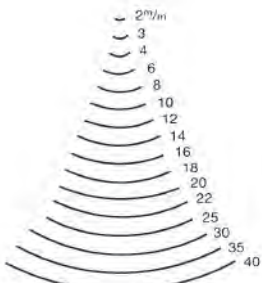


- 505-2604 Spoon Bent Gouge 04mm
- 505-2606 Spoon Bent Gouge 06mm
- 505-2610 Spoon Bent Gouge 10mm
- 505-2612 Spoon Bent Gouge 12mm
- 505-2616 Spoon Bent Gouge 16mm
- 505-2618 Spoon Bent Gouge 18mm



- 505-7516 Spade Gouge 16mm

SWEEP #6



- 505-0602 Straight Gouge 02mm
- 505-0603 Straight Gouge 03mm
- 505-0604 Straight Gouge 04mm
- 505-0606 Straight Gouge 06mm
- 505-0608 Straight Gouge 08mm



- 505-0602 Straight Gouge 02mm

- 505-0610 Straight Gouge 10mm
- 505-0612 Straight Gouge 12mm
- 505-0614 Straight Gouge 14mm
- 505-0616 Straight Gouge 16mm
- 505-0618 Straight Gouge 18mm
- 505-0620 Straight Gouge 20mm
- 505-0625 Straight Gouge 25mm
- 505-0630 Straight Gouge 30mm
- 505-0635 Straight Gouge 35mm



- 505-1506 Curved Gouge 06mm
- 505-1510 Curved Gouge 10mm
- 505-1512 Curved Gouge 12mm
- 505-1514 Curved Gouge 14mm
- 505-1516 Curved Gouge 16mm
- 505-1520 Curved Gouge 20mm
- 505-1525 Curved Gouge 25mm
- 505-1535 Curved Gouge 35mm



- 505-2704 Spoon Bent Gouge 04mm
- 505-2706 Spoon Bent Gouge 06mm
- 505-2712 Spoon Bent Gouge 12mm
- 505-2716 Spoon Bent Gouge 16mm
- 505-2718 Spoon Bent Gouge 18mm

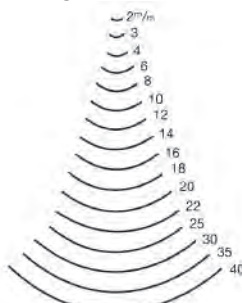


- 505-3606 Back Bent Gouge 06mm
- 505-3610 Back Bent Gouge 10mm



- 505-7602 Spade Gouge 02mm
- 505-7606 Spade Gouge 06mm
- 505-7610 Spade Gouge 10mm
- 505-7616 Spade Gouge 16mm

SWEEP #7



- 505-0702 Straight Chisel 02mm
- 505-0703 Straight Chisel 03mm
- 505-0704 Straight Chisel 04mm
- 505-0706 Straight Chisel 06mm
- 505-0708 Straight Chisel 08mm
- 505-0710 Straight Chisel 10mm
- 505-0712 Straight Chisel 12mm
- 505-0714 Straight Chisel 14mm
- 505-0716 Straight Chisel 16mm
- 505-0718 Straight Chisel 18mm
- 505-0720 Straight Chisel 20mm
- 505-0725 Straight Chisel 25mm
- 505-0730 Straight Chisel 30mm
- 505-0735 Straight Chisel 35mm



- 505-1606 Curved Gouge 06mm
- 505-1610 Curved Gouge 10mm



- 505-1612 Curved Gouge 12mm
- 505-1614 Curved Gouge 14mm
- 505-1616 Curved Gouge 16mm
- 505-1620 Curved Gouge 20mm
- 505-1625 Curved Gouge 25mm

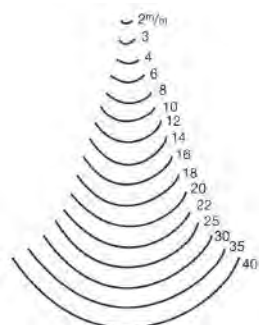


- 505-2804 Spoon Bent Gouge 04mm
- 505-2806 Spoon Bent Gouge 06mm
- 505-2808 Spoon Bent Gouge 08mm
- 505-2810 Spoon Bent Gouge 10mm
- 505-2812 Spoon Bent Gouge 12mm
- 505-2816 Spoon Bent Gouge 16mm
- 505-2818 Spoon Bent Gouge 18mm



- 505-7702 Spade Gouge 02mm
- 505-7706 Spade Gouge 06mm
- 505-7710 Spade Gouge 10mm
- 505-7716 Spade Gouge 16mm

SWEEP #8



- 505-0802 Straight Gouge 02mm
- 505-0803 Straight Gouge 03mm
- 505-0804 Straight Gouge 04mm
- 505-0806 Straight Gouge 06mm
- 505-0808 Straight Gouge 08mm
- 505-0810 Straight Gouge 10mm
- 505-0812 Straight Gouge 12mm
- 505-0814 Straight Gouge 14mm
- 505-0816 Straight Gouge 16mm
- 505-0818 Straight Gouge 18mm
- 505-0820 Straight Gouge 20mm
- 505-0825 Straight Gouge 25mm
- 505-0830 Straight Gouge 30mm
- 505-0835 Straight Gouge 35mm

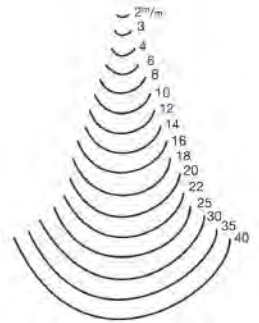


- 505-1706 Curved Gouge 06mm
- 505-1710 Curved Gouge 10mm
- 505-1712 Curved Gouge 12mm
- 505-1714 Curved Gouge 14mm
- 505-1716 Curved Gouge 16mm
- 505-1720 Curved Gouge 20mm
- 505-1725 Curved Gouge 25mm



- 505-2904 Spoon Bent Gouge 04mm
- 505-2906 Spoon Bent Gouge 06mm
- 505-2908 Spoon Bent Gouge 08mm
- 505-2910 Spoon Bent Gouge 10mm
- 505-2912 Spoon Bent Gouge 12mm
- 505-2918 Spoon Bent Gouge 18mm

SWEEP #9



- 505-0902 Straight Gouge 02mm
- 505-0903 Straight Gouge 03mm
- 505-0904 Straight Gouge 04mm
- 505-0906 Straight Gouge 06mm
- 505-0908 Straight Gouge 08mm
- 505-0910 Straight Gouge 10mm
- 505-0912 Straight Gouge 12mm
- 505-0914 Straight Gouge 14mm
- 505-0916 Straight Gouge 16mm
- 505-0918 Straight Gouge 18mm
- 505-0920 Straight Gouge 20mm
- 505-0925 Straight Gouge 25mm
- 505-0930 Straight Gouge 30mm
- 505-0935 Straight Gouge 35mm



- 505-1806 Curved Gouge 06mm
- 505-1808 Curved Gouge 08mm
- 505-1810 Curved Gouge 10mm
- 505-1812 Curved Gouge 12mm
- 505-1814 Curved Gouge 14mm
- 505-1816 Curved Gouge 16mm
- 505-1820 Curved Gouge 20mm
- 505-1825 Curved Gouge 25mm

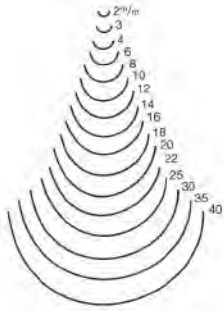


- 505-3004 Spoon Bent Gouge 04mm
- 505-3006 Spoon Bent Gouge 06mm
- 505-3008 Spoon Bent Gouge 08mm
- 505-3010 Spoon Bent Gouge 10mm
- 505-3012 Spoon Bent Gouge 12mm



FULL SIZE OR PROFESSIONAL CARVING TOOLS

SWEEP #10



- 505-1002 Straight Gouge 02mm
- 505-1003 Straight Gouge 03mm
- 505-1004 Straight Gouge 04mm
- 505-1006 Straight Gouge 06mm
- 505-1008 Straight Gouge 08mm
- 505-1010 Straight Gouge 10mm
- 505-1012 Straight Gouge 12mm
- 505-1014 Straight Gouge 14mm
- 505-1016 Straight Gouge 16mm
- 505-1018 Straight Gouge 18mm
- 505-1020 Straight Gouge 20mm
- 505-1025 Straight Gouge 25mm
- 505-1030 Straight Gouge 30mm
- 505-1035 Straight Gouge 35mm

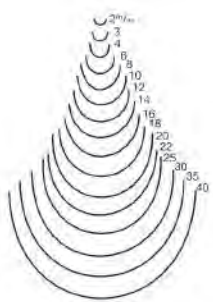


- 505-1906 Curved Gouge 06mm
- 505-1910 Curved Gouge 10mm
- 505-1912 Curved Gouge 12mm
- 505-1914 Curved Gouge 14mm
- 505-1916 Curved Gouge 16mm
- 505-1920 Curved Gouge 20mm
- 505-1922 Curved Gouge 22mm



- 505-3104 Spoon Bent Gouge 04mm
- 505-3106 Spoon Bent Gouge 06mm
- 505-3108 Spoon Bent Gouge 08mm
- 505-3110 Spoon Bent Gouge 10mm
- 505-3112 Spoon Bent Gouge 12mm
- 505-3116 Spoon Bent Gouge 16mm
- 505-3118 Spoon Bent Gouge 18mm

SWEEP #11



- 505-1102 Straight Gouge 02mm
- 505-1103 Straight Gouge 03mm
- 505-1104 Straight Gouge 04mm
- 505-1106 Straight Gouge 06mm
- 505-1108 Straight Gouge 08mm
- 505-1110 Straight Gouge 10mm
- 505-1112 Straight Gouge 12mm
- 505-1114 Straight Gouge 14mm

- 505-1116 Straight Gouge 16mm
- 505-1118 Straight Gouge 18mm
- 505-1120 Straight Gouge 20mm
- 505-1125 Straight Gouge 25mm
- 505-1130 Straight Gouge 30mm
- 505-1135 Straight Gouge 35mm



- 505-2006 Curved Gouge 06mm
- 505-2010 Curved Gouge 10mm
- 505-2012 Curved Gouge 12mm
- 505-2014 Curved Gouge 14mm
- 505-2016 Curved Gouge 16mm
- 505-2020 Curved Gouge 20mm
- 505-2025 Curved Gouge 25mm



- 505-3204 Spoon Bent Gouge 04mm
- 505-3206 Spoon Bent Gouge 06mm
- 505-3208 Spoon Bent Gouge 08mm
- 505-3210 Spoon Bent Gouge 10mm
- 505-3212 Spoon Bent Gouge 12mm
- 505-3216 Spoon Bent Gouge 16mm
- 505-3218 Spoon Bent Gouge 18mm

75° DEGREE V-TOOL #39



- 505-3902 Straight V-Chisel 02mm
- 505-3904 Straight V-Chisel 04mm
- 505-3906 Straight V-Chisel 06mm
- 505-3910 Straight V-Chisel 10mm
- 505-3914 Straight V-Chisel 14mm



- 505-4006 Curved V-Chisel 06mm
- 505-4012 Curved V-Chisel 12mm



- 505-4308 Spoon Bent V-Chisel... 08mm

60° DEGREE V-TOOL #41



- 505-4102 Straight V-Chisel 02mm
- 505-4104 Straight V-Chisel 04mm
- 505-4106 Straight V-Chisel 06mm
- 505-4110 Straight V-Chisel 10mm
- 505-4114 Straight V-Chisel 14mm
- 505-4125 Straight V-Chisel 25mm



- 505-4206 Curve V-Chisel..... 06mm



- 505-4418 Spoon Bent V-Chisel... 18mm

100° DEGREE V-TOOL #45



- 505-4502 Straight V-Chisel..... 02mm
- 505-4504 Straight V-Chisel 04mm
- 505-4512 Straight V-Chisel 12mm



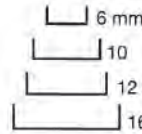
- 505-4616 Curved V-Chisel 16mm

GROOVING TOOLS #47



- 505-4701 1.0mm
- 505-4715 1.5mm
- 505-4702 2.0mm

MACARONI TOOL



- 505-6006 06mm
- 505-6010 10mm
- 505-6012 12mm
- 505-6016 16mm

SWISS PATTERN FISH TAIL TOOLS



- 505-8150 50mm



- 505-8350 50mm



- 505-8650 50mm



- 505-8750 50mm

CARVING TOOL HANDLE



The same handle as used on the full-size Two Cherries carving tools. Size indicated is the width of tool which the handle generally fits.

- 505-0092 2 to 16mm
- 505-0093 18 to 22mm
- 505-0094 25 to 80mm

BRONZE HEAD MALLETS



The heavy, but compact bronze head mallet is ideal for striking use when a compact stroke or limited access area is being worked. Despite its size and weight, it is very controllable and lends itself to both full impact strikes as well as delicate tapping. Available in three weights and each comes with a storage pouch.

- 515-4380 Bronze Mallet..... 380 Grams
- 515-4550 Bronze Mallet..... 550 Grams
- 515-4750 Bronze Mallet..... 750 Grams

WOODCARVERS' SCREW



A fantastic solution for keeping a piece in place while working with two hands.

- 515-3506 Carver's Screw



These smaller Two Cherries carving tools are the same quality as the larger professional tools shown on the previous pages, but fill the need for the occasional carver, and the carver doing smaller work. These are professional quality, smaller tools, polished all around. The blades are about 4" long and the overall length with handle is about 8".

All of these tools come with an octagonal shaped handle that you will find easy to work with.

HOBBY CARVING TOOLS

STRAIGHT, SHALLOW GOUGE SWEEP 8



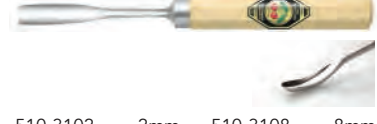
- 510-0802 2mm 510-0808 8mm
510-0804 4mm 510-0810 10mm
510-0806 6mm

CURVED GOUGE SWEEP 10



- 510-1902 2mm 510-1908 8mm
510-1904 4mm 510-1910 10mm
510-1906 6mm

SPOON BENT, GOUGE SWEEP 10



- 510-3102 2mm 510-3108 8mm
510-3104 4mm 510-3110 10mm
510-3106 6mm

STRAIGHT GOUGE SWEEP 10



- 510-1002 2mm 510-1008 8mm
510-1004 4mm 510-1010 10mm
510-1006 6mm

SPOON BENT SWEEP 10



- 510-2102 2mm 510-2108 8mm
510-2104 4mm 510-2110 10mm
510-2106 6mm

STRAIGHT V-CHISEL 75°



- 510-3902 2mm 510-3908 8mm
510-3904 4mm 510-3910 10mm
510-3906 6mm

STRAIGHT CHISEL EDGE



- 510-0102 2mm 510-0108 8mm
510-0104 4mm 510-0110 10mm
510-0106 6mm

CURVED, VERY SHALLOW GOUGE SWEEP 6



- 510-1502 2mm 510-1508 8mm
510-1504 4mm 510-1510 10mm
510-1506 6mm

SPOON BENT, VERY SHALLOW GOUGE SWEEP 6



- 510-2702 2mm 510-2708 8mm
510-2704 4mm 510-2710 10mm
510-2706 6mm

CURVED V-CHISEL 75°



- 510-4002 2mm 510-4008 8mm
510-4004 4mm 510-4010 10mm
510-4006 6mm

STRAIGHT SKEW EDGE



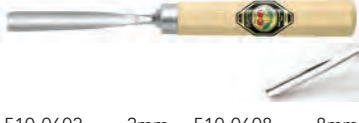
- 510-0202 2mm 510-0208 8mm
510-0204 4mm 510-0210 10mm
510-0206 6mm

SPOON BENT V-CHISEL 75°



- 510-4302 2mm 510-4308 8mm
510-4304 4mm 510-4310 10mm
510-4306 6mm

STRAIGHT, VERY SHALLOW GOUGE SWEEP 6



- 510-0602 2mm 510-0608 8mm
510-0604 4mm 510-0610 10mm
510-0606 6mm

CURVED, SHALLOW GOUGE SWEEP 8



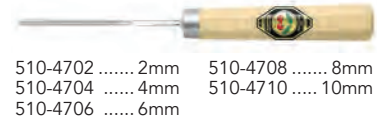
- 510-1702 2mm 510-1708 8mm
510-1704 4mm 510-1710 10mm
510-1706 6mm

SPOON BENT, SHALLOW GOUGE SWEEP 8



- 510-2902 2mm 510-2908 8mm
510-2904 4mm 510-2910 10mm
510-2906 6mm

STRAIGHT GROOVING GOUGE SWEEP 11



- 510-4702 2mm 510-4708 8mm
510-4704 4mm 510-4710 10mm
510-4706 6mm

FOUR PIECE SET



This four piece set is made to the highest standards of German quality by Two Cherries. This basic set contains a straight chisel (510-0108), medium gouge (510-0808), a V-chisel (510-3906) and chip carving knife (515-3352).

515-3424 Small Set of 4

SEVEN PIECE SET



Great starter set comes with a straight chisel (510-0108), medium gouge (510-0806), V-chisel (510-3906), three chip carving knives (515-3351, 3353, 3358) and a sharpening stone! Perfect for the beginner woodcarver, or the wood-worker that needs a few tools to use in adding carved details to their work.

515-3427 Small Set of 7

CARVING TOOL SET



Ten Two Cherries carving tools along with a sharpening stone -- in a beautiful wooden storage box. Tools include gouges, skew, v-tool, and chip carving knives. This set will allow a wide variety of work to be performed, and is a great base upon which to build a larger collection of Two Cherries carving tools. It makes a splendid gift!

515-3441 11 Piece Set

CARVING TOOL SET



Handy set of seven high quality carving tools in a fitted wooden box. Set includes straight tool, medium gouge, V-chisel, three chip carving knives, and a sharpening stone. See item 515-3427 for exact specifications.

515-3437 Set of 7 in Wood Box



PEAR HANDLED CARVING TOOLS



For carvers who do mostly smaller work, where large amounts of wood are not being removed, these pear shaped handled chisels are perfect. The handle is shaped to be comfortable in the hand, and a flat on one side keeps the tool from rolling off the workbench. Each handle is protected with a high gloss finish. The blades are about 4" long and the overall length with handle is about 6-1/2".

These are the same blades found on the smaller octagon handled tools, and the blades keep to the exacting high standards found on all Two Cherries tools. Hand forged of high carbon steel, the blades are heat treated to sixty-one degrees Rockwell, and then ground and polished all around.

STRAIGHT SKEW EDGE



- 511-0202 2mm 511-0208 8mm
- 511-0204 4mm 511-0210 10mm
- 511-0206 6mm

STRAIGHT, VERY SHALLOW GOUGE SWEEP 6



- 511-0602 2mm 511-0608 8mm
- 511-0604 4mm 511-0610 10mm
- 511-0606 6mm

STRAIGHT, SHALLOW GOUGE SWEEP 8



- 511-0802 2mm 511-0808 8mm
- 511-0804 4mm 511-0810 10mm
- 511-0806 6mm

STRAIGHT GOUGE SWEEP 10



- 511-1002 2mm 511-1008 8mm
- 511-1004 4mm 511-1010 10mm
- 511-1006 6mm

CURVED, VERY SHALLOW GOUGE SWEEP 6



- 511-1502 2mm 511-1508 8mm
- 511-1504 4mm 511-1510 10mm
- 511-1506 6mm

CURVED, SHALLOW GOUGE SWEEP 8



- 511-1702 2mm 511-1708 8mm
- 511-1704 4mm 511-1710 10mm
- 511-1706 6mm

CURVED GOUGE SWEEP 10



- 511-1902 2mm 511-1908 8mm
- 511-1904 4mm 511-1910 10mm
- 511-1906 6mm

SPOON BENT SWEEP 10



- 511-2102 2mm 511-2108 8mm
- 511-2104 4mm 511-2110 10mm
- 511-2106 6mm

SPOON BENT, VERY SHALLOW GOUGE SWEEP 6



- 511-2702 2mm 511-2708 8mm
- 511-2704 4mm 511-2710 10mm
- 511-2706 6mm

SPOON BENT, SHALLOW GOUGE SWEEP 8



- 511-2902 2mm 511-2908 8mm
- 511-2904 4mm 511-2910 10mm
- 511-2906 6mm

SPOON BENT, GOUGE SWEEP 10



- 511-3102 2mm 511-3108 8mm
- 511-3104 4mm 511-3110 10mm
- 511-3106 6mm

STRAIGHT V-CHISEL 75°



- 511-3902 2mm 511-3908 8mm
- 511-3904 4mm 511-3910 10mm
- 511-3906 6mm

CURVED V-CHISEL 75°



- 511-4002 2mm 511-4008 8mm
- 511-4004 4mm 511-4010 10mm
- 511-4006 6mm

SPOON BENT V-CHISEL 75°



- 511-4302 2mm 511-4308 8mm
- 511-4304 4mm 511-4310 10mm
- 511-4306 6mm

STRAIGHT GROOVING GOUGE SWEEP 11



- 511-4702 2mm 511-4708 8mm
- 511-4704 4mm 511-4710 10mm
- 511-4706 6mm

PEAR HANDLED SET



Set of six commonly used carving tools with pear shaped handles. Chosen from the selection of pear shaped handled tools on this page. Blades are honed and can be used immediately. Also available in an attractive and highly functional fitted wooden box. Contains chisels 511-0102, 511-0106, 511-0110, 511-0606, 511-0610, and 511-3904.

511-0050 Set of 6



SPECIALTY CARVING TOOLS

CHIP CARVING TOOLS

In addition to being perfectly suited for chip carving work, these knives work well in whittling, carving signs, lithograph to name a few applications.



515-3351Chip Carving Knife



515-3352Chip Carving Knife



515-3353Chip Carving Knife



515-3354Chip Carving Knife



515-3356Chip Carving Knife



515-3357Chip Carving Knife



515-3358Chip Carving Knife



515-3360Chip Carving Knife



515-3361Chip Carving Knife



515-3362Chip Carving Knife



515-3362Chip Carving Knife

Set of 10 Chip Carving Knives which including all models apart from the 515-3363.

515-3310 Set of 10 Knives



Similar to the 3358 knife above, but slightly smaller handle.

515-3363Chip Carving Knife

CHIP CARVING SET



Set of 3 of with the most popular Chip Carving Knives 515-3352, 515-3353 and 515-3358.

515-3303 Set of 3

MICRO CARVING TOOLS

Like all other products made by Two Cherries, these tools are hand forged and finely polished. The blades are mounted on a specially designed wooden handle to give an easy-to-use feeling. The blades are approximately 60mm long on a handle of 110mm. 14 different tools are available in either open stock or useful sets. These are the tools that woodcarvers have been looking for to work the details in their carving.



512-0015Curved Chisel 1.5mm



512-0115 Straight Chisel 1.5mm



512-0215Skew Chisel 1.5mm



512-0310 Straight Shallow Gouge 1.0mm



512-0610Straight Medium Gouge 1.0mm



512-1105Straight Deep Gouge 0.5mm



512-1110 Straight Deep Gouge 1.0mm



512-1115Straight Deep Gouge 1.5mm



512-1120 Straight Deep Gouge 2.0mm

MICRO CARVING TOOLS



Set of all 14 Micro Carving Tools in Fitted Wooden Box

512-5414 Set of 14



512-1510Curved Medium Gouge 1.0mm



512-2005Curved Deep Gouge 0.5mm



512-2010Curved Gouge 1.0mm

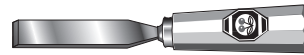


512-3915Straight V-Chisel 1.5mm



512-4015 Curved V-Chisel 1.5mm

MINIATURE CARVING TOOLS



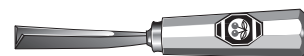
6mm straight gouge



6mm Skew



4mm and 8mm curved gouges



4mm V Tool

Have you ever needed a very small carving tool for working in limited access or on very small pieces of work? Two Cherries has provided the solution! Small octagon handles fit comfortably in the hand, and the balance of handle to blade is perfect. Still made in the same manner that makes all Two Cherries tools the finest in the world, with blades of high carbon steel, heat treated to take and hold an edge. Blades are approximately 2 1/4" long with overall tool length about 4 1/3".

515-8500 Set of 5 (without case)

PROFESSIONAL TOOL SETS

SET OF TWELVE

Twelve piece set is the start-up set, while the six piece set can be used as a beginning set, but is more useful as an add-on of larger tools to the twelve.

- 505-0114, 505-0206, 505-0514, 505-0516, 505-0603, 505-0610, 505-0706, 505-0814, 505-1102, 505-1406, 505-2103, 505-3906



505-0012 Set of 12

SET OF SIX

- 505-0214, 505-0616, 505-0806, 505-1114, 505-1610, 505-3914



505-0006 Set of 12



MEASURING AND MARKING TOOLS

High quality French compasses and calipers make easy work of measuring and laying out with accuracy. Made with a unique quick nut adjustment feature so changing the settings is super easy and fast. Nicely polished with some steel and brass fittings. Size indicates maximum capacity.

DIVIDERS



- 850-1010 100 mm
- 850-1015 150 mm
- 850-1020 200 mm

OUTSIDE CALIPERS



- 850-1210 100 mm
- 850-1215 150 mm
- 850-1220 200 mm
- 850-1225 250 mm

INSIDE CALIPERS



- 850-1100 100 mm
- 850-1115 150 mm
- 850-1120 200 mm

COMPASS



- 850-1310 100 mm
- 850-1315 150 mm
- 850-1320 200 mm

GAUGES

Beechwood and Rosewood Gauges and Squares that are beautifully made in Sheffield England by skilled craftsmen. The tools are produced with brass fittings on the movable head for adjusting to get the perfect measurement required. The beechwood items have plastic thumbscrew while the Rosewood mortise gauge is furnished with a brass thumbscrew.

MORTISE GAUGES

TWO SIDED GAUGES

MARKING GAUGE

Double Pins for easily mark parallel lines.



605-1050Beechwood Marking Gauge

CUTTING GAUGE

Score wood across the grain or cut strips of wood veneer and small rebates with this easy-to-use tool. The cutter is secured with a brass wedge allowing it to be removed for sharpening as required.



605-1100Beechwood Cutting Gauge

One side is for marking mortises and has a sliding adjustment mechanism while the other side has a single pin which allows the gauge to be used as a traditional marking gauge.

ROSEWOOD MORTISE GAUGE



605-1150Rosewood Mortise Gauge

BEECHWOOD MORTISE GAUGE



605-1250Beechwood Mortise Gauge

TRY SQUARES

Tempered steel blades riveted to a beautiful Rosewood end with brass inlay diamonds

ROSEWOOD TRY SQUARE



605-22609"

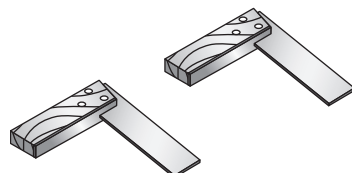
MINIATURE ROSEWOOD TRY SQUARE



605-40103"

PAIR OF ROSEWOOD DOVETAIL MARKERS

This set consists of the most traditional angles for hand cut dovetails, 1:6 and 1:8. Each has a tempered steel blade measuring 3" and brass fittings.



605-4020 Set of 2 Dovetail Squares

FOLDING RULER

3' folding ruler made of seasoned hardwood with large, clear inch markings. A traditionally designed tool that any woodworker would still use and enjoy daily Made by family factory in the Netherlands



605-1167Ruler

SLIDING T-BEVELS

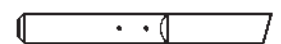
These are made of Rosewood and Tempered Steel.



- 605-3150 7 1/2" Sliding T-Bevel
- 605-3160 9" Sliding T-Bevel
- 605-4060 ... 4 1/2" Miniature Sliding T-Bevel

ROSEWOOD MARKING KNIFE

A 6 1/2" knife for lightly accurate scoring wood for cutting lines.



605-5000Knife



PLANES AND SPOKESHAVES

The Rider brand has been producing high quality tools in the family owned and operated factory since 1976. The second generation now oversees the hand plane making portion of the operation with a passion for precision after apprenticing under British plane makers. He brought all the knowledge acquired in the UK back to India and the family factory.

BENCH PLANES

The body of these planes are ribbed to ensure strength and rigidity, The machined faces of the frog bed sit firmly onto a complimentary machined faces on the body of the plane, and then fastened into position by two screws. This attention to detail helps to prevent chattering and allows for an excellent finish. The cut irons are made of high carbon steel which are hardened and tempered under scientific conditions for accuracy and uniformity. The attached handles and knobs are made from hardwood.

SMOOTHING PLANE #3



Sole Measurement
895-1300 9" x 2½"

SMOOTHING PLANE #4



Sole Measurement
895-1400 9½" x 2½"

JACK PLANE #5



Sole Measurement
895-1500 14" x 2½"

FROE PLANE #6



Sole Measurement
895-1600 18¼" x 3"

JOINTER PLANE #7



Sole Measurement
895-1700 22" x 3"

BLOCK PLANES

Both models come with a mouth that is fully adjustable and capable of fine and coarse work, accurate trimming and smoothing. The size of the planes means they can be held with one hand, makes working on any part of a project very accessible. The screw adjusted cutting iron is held firmly in position by a lever and cam, and the 60½ plane keeping the cutting iron at a 13.5°

BLOCK PLANE # 9 ½



Sole Measurement
895-2000 6½" x 2"

LOW ANGLE BLOCK PLANE #60 ½



Sole Measurement
895-2500 6" x 1¾"

BULLNOSE REBATE PLANE

With a 1½" wide base, the mouth of this plane is adjustable by using the included shims. The front can also be removed to convert into a chisel plane. Beautifully constructed for use on shoulder, tenons, and joints.



895-4400 Bulldog Rebate Plane #77

SPOKESHAVES

Working like a planner with extra control of the two handles for smoothing small pieces such as spindles or chair legs. 10" long with 2¼" blade.



895-1000 Flat Spokeshave
895-1050 Round Spokeshave

BULLNOSE PLANE

Having the cutting blade at the front, this small plane, 4" long plane, fits nicely in one hand with side indents to allow for best grip, useful for planing rebates or surfaces near corners of frames among many applications.



895-4600 Bullnose Rebate Plane #90

3 IN 1 PLANE

An extremely versatile tool that combines the features of a shoulder rebate, chisel plane and adjustable mouth bullnose plane. 6" x 1"



895-4800 3 in 1 Shoulder Plane #3110

REPLACEMENT IRONS

- 895-9100 for 895-1000 and 895-1050 Spokeshaves
- 895-9145 45mm iron for 895-1300 Bench Plane
- 895-9150 50mm iron for 895-1400 and 895-1500 Bench Plane
- 895-9160 60mm iron for 895-1600 and 895-1700 Bench Plane
- 895-9200 for 895-2000 9 ½ Block Plane
- 895-9350 for 895-4400 77 Rebate Plane
- 895-9400 for 895-2500 60 ½ Block Plane
- 895-9600 for 895-4600 90 Bullnose Plane
- 895-9700 for 895-4700 92 Shoulder Plane
- 895-9800 for 895-4800 3-1 Plane
- 895-9900 for 895-4900 Router Plane

SHOULDER PLANE

A slim ¾" wide rebate plane with an adjustable mouth for fine or coarse work. The front is removable to convert into chisel plane.



895-4700 Shoulder Plane #92

ROUTER PLANE

Small plane for cleaning out the bottoms of cuts. The depth of the ¼" wide blade can be adjusted to a max of 1". This is particularly useful for inlays and lock plates.



895-4900 Router Plane #271

MINIATURE PLANES

Beautifully made of Rosewood and Brass, these miniature versions are fantastic for the construction of dollhouses, toys, Jewelry Boxes, and even fine work on larger projects. All are 3" long with HSS blades.



672-7050 Block Plane



672-7100 Bullnose Plane



672-7150 Scrub Plane



DRILLING

Countersinks and the corresponding plug cutter will give any project the most professional finish. Made in the USA by the Fuller family for multiple generations. All parts are replaceable. Round or Hex shanks available

COUNTERSINK DRILLS



Cs Complete	Screw Size	Cs
355-4030	3	1/4"
355-4040	4	5/16"
355-4050	5	3/8"
355-4060	6	3/8"
355-4070	7	3/8"
355-4080	8	3/8"
355-4090	9	3/8"
355-4100	10	7/16"
355-4120	12	1/2"
355-4140	14	1/2"
355-4160	16	5/8"
355-4180	18	5/8"

DRILL STOP COLLARS



Set contains five collars 1/4" to 1/2" by 16ths of an inch. Made in USA.

355-7205	Set of 5
355-7040	1/4"
355-7050	5/16"
355-7060	3/8"
355-7070	7/16"
355-7080	1/2"
355-7100	5/8"
355-7120	3/4"
355-7140	7/8"
355-7160	1"

REPLACEMENT PARTS

Every part of the fuller countersinks can be replaced, and we stock them all.

COUNTERSINK ONLY

Countersink	Screw Size	Plug Only
355-6030	3	1/4"
355-6040	4	5/16"
355-6050	5	3/8"
355-6060	6	3/8"
355-6070	7	3/8"
355-6080	8	3/8"
355-6090	9	3/8"
355-6100	10	7/16"
355-6120	12	1/2"
355-6140	14	1/2"
355-6160	16	5/8"
355-6180	18	5/8"
355-4991	Set Screw	
355-4992	Allen Wrench	

LONG LENGTH TAPER DRILLS

Item	Fits CS	Item	Fits CS
355-5035	3	355-5095	9
355-5045	4	355-5105	10
355-5055	5	355-5125	12
355-5065	6	355-5145	14
355-5075	7	355-5165	16
355-5085	8	355-5185	18

HEX SHANK



357-4050	#5 with Hex Shank
357-4060	#6 with Hex Shank
357-4070	#7 with Hex Shank
357-4080	#8 with Hex Shank
357-4090	#9 with Hex Shank
357-4100	#10 with Hex Shank

STOP COLLARS



Use these stop collars on the countersinks above. Stop collars provides the operator control over how deep to drill. The collar is easy to use, simply slide it on the countersink and tighten with a hex wrench.

357-7060	3/8"
357-7080	1/2"

PLUG CUTTERS



357-3060	3/8" with Hex Shank
357-3080	1/2" with Hex Shank

REPLACEMENT TAPER DRILLS



Tapered to match screws sizes and perfect for drilling sized pilot holes which maximize thread grip along the full length of the screw.

357-5050	HSS Taper Drill Only 1/8" (#5)
357-5060	HSS Taper Drill Only 9/64" (#6)
357-5070	HSS Taper Drill Only 5/32" (#7)
357-5080	HSS Taper Drill Only 11/64" (#8)
357-5090	HSS Taper Drill Only 3/16" (#9)
357-5100	HSS Taper Drill Only 13/64" (#10)

REGULAR LENGTH TAPER DRILLS

Item	Fits CS	Item	Fits CS
355-5030	3	355-5100	10
355-5040	4	355-5120	12
355-5050	5	355-5140	14
355-5060	6	355-5160	16
355-5070	7	355-5180	18
355-5080	8	355-5190	24
355-5090	9	355-5200	7/16" Drill

PLUG CUTTERS



The Chamfer design allows the making of perfectly smooth plugs for fill-in drill holes. When using the same wood as the project, the hole will practically disappear.

355-3040	1/4"
355-3050	5/16"
355-3060	3/8"
355-3070	7/16"
355-3080	1/2"
355-3090	9/16"
355-3100	5/8"
355-3120	3/4"
355-3140	7/8"
355-3160	1"
355-3180	1-1/8"
355-3200	1-1/4"
355-3220	1-3/8"
355-3240	1-1/2"

"SNUG-PLUGS" VERITAS



These plug cutters cut a slightly tapered plug so that you can always get a good fit between the plug and the hole. Sides of the plugs will be smoother, due to the shaving cut that these cutters produce. Lastly, plugs will have a chamfered end for easy insertion!

860-3104*	1/4"
860-3105	5/16"
860-3106*	3/8"
860-3107	7/16"
860-3108*	1/2"
860-3100	Set/3 Inch marked * above

SELF-CENTERING DRILL BITS



The original self-centering Vix Bits which are proudly made in the USA. Speedy, and accurate drilling tools with self-centering capabilities. These Vix bits save hours of time when drilling holes for hinges, strike plates and any hardware installation. Available with regular or Hex shanks. All parts are replaceable and stocked.

Bit #	Fits Screw Size
305-0995	#3
305-1000	#5
305-1070	#7
305-1005	#9
305-1010	#12
305-1015	#14
305-3003	#3 Hex Shank
305-3005	#5 Hex Shank
305-3009	#9 Hex Shank
305-2050	Vix Bit 5mm
305-2100	Vix Bit 1/4"

See price list for replacement parts.

HOLLOW SCREW EXTRACTORS



Turned counterclockwise in an electric drill, this tool makes easy work of removing broken screws from wood. The clean hole that is left can be filled with a dowel or wood plug. Made in Taiwan.

800-3004	1/4" for up to a #8 Screw
800-3005	5/16" for up to a #10 Screw
800-3006	3/8" for up to a #12 Screw

COUNTERSINK SIZING TABLE

Size	Setscrew	Counterbore Diameter	Counterbore OL	Drill Size
3	1/8"	3/16"	3/8"	3/32"
4	3/16"	5/16"	7/8"	7/64"
5	3/16"	3/8"	7/8"	1/8"
6	3/16"	3/8"	7/8"	9/64"
7	3/16"	3/8"	7/8"	5/32"
8	3/16"	3/8"	7/8"	11/64"
9	3/16"	3/8"	7/8"	3/16"
10	1/4"	7/16"	7/8"	13/64"
12	1/4"	7/8"	7/8"	7/32"
14	1/4"	1/2"	7/8"	1/4"
16	5/16"	5/8"	1 1/16"	9/32"
18	5/16"	5/8"	1 1/16"	5/16"



STERN DRILL BITS



For over 100 years the Jansky family has been making Stern drill bits of the highest quality in the Austrian countryside. Now in the 4 th generation, the factory continues to produce an exceptional product while always seeking ways of innovating.

FORSTNER BITS



Drawing upon the years of experience making traditional s, Stern has made improvements by adding tooth like pattern on the outside rim of the bits. The small center tip allows accurate placement when starting a cut and can be guided in any direction regardless of woodgrain or knots, while leaving a flat bottom hole. Available in Fraction or Metric sizes and can be resharpened by a professional.

Table listing Forstner bit part numbers and sizes in inches and millimeters.

UNIVERSAL BITS



High Carbene bits that make a smooth, flat bottom hole, and with the straight cutting edges they can be re-sharpened with ease.

Table listing Universal bit part numbers and sizes in inches and millimeters.

CARBIDE TIPPED BITS



Drilling tools with carbide tipped cutting edges. Several sizes (especially 35mm) are essential for mounting adjustable hidden hinges. Overall length of 60mm.

Table listing Carbide Tipped bit part numbers and sizes in millimeters.

METRIC BRAD POINT DRILLS HIGH SPEED STEEL



Excellent quality High Speed Steel woodworking bits. These have straight shanks to 10mm. Sizes larger than 10mm have 10mm shanks. Stern - Austria.

Table listing Metric Brad Point Drill bit part numbers, diameters, and lengths.

FORSTNER BIT EXTENSION



3 pieces extension set for inch size forstner and multispur bits. Adds up to 3 1/2" to the drilling depth. 570-3004Extension set for 5/16" and 3/8" shanks

COUNTERSINKS



Stern has created a special countersink that looks unlike others on the market but leaves the smoothest finish imaginable because the bit shears rather than scraps. Wood Magazine called these "the bets countersink I've ever seen."

Table listing Counter Sink bit part numbers and sizes.

HAND COUNTERSINK



570-6100 16mm handheld version with wooden handle



DRILLING

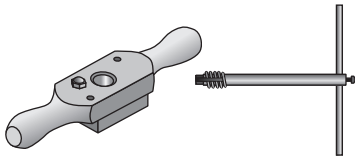
WOODWORKING BIT BRACE



Three jaw brace that can securely hold both round and hex shanks bits but designed with a square hole in the base of the chuck for use with traditional auger bits. The ratchet mechanism allows this French made brace to work within confined spaces easily. An old-fashioned tool that still has many uses in modern times.

838-4000 10" Brace - 3 Jaws

THREADBOX AND TAP



A complete tool for adding threads on wooden dowel, each size of threadbox comes with matching tap. Comfortable plastic body, with nice quality cutters make quick work of this job. Bottoming taps are available separately that allows carrying the threads produced by the complete tool to the bottom of blind holes.

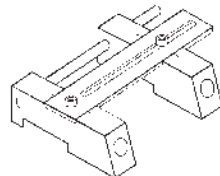
800-1008 Threadbox & Tap 1/2" x 8 TPI
800-1012 Threadbox & Tap 3/4" x 6 TPI
800-1016 Threadbox & Tap 1" x 6 TPI
800-1020 Threadbox & Tap 1-1/4" x 6 TPI
800-1024 Threadbox & Tap 1-1/2" x 6 TPI
800-1208 Bottoming Tap 1/2" x 8 TPI
800-1212 Bottoming Tap 3/4" x 6 TPI
800-1216 Bottoming Tap 1" x 6 TPI
800-1220 Bottoming Tap 1-1/4" x 6 TPI
800-1224 Bottoming Tap 1-1/2" x 6 TPI
800-1090 Cutter only for Threadboxes

DOUBLE POCKET-HOLE JIGS

Both styles make it convenient to drill two pocket holes with only one positioning of the jig. Perfect for face frames, cabinet doors, etc.



Non-adjustable holes on 3/4" centers.
800-2210 Nonadjustable Jig



Adjustable from 3/4" to 3" centers.
800-2220 Adjustable Jig

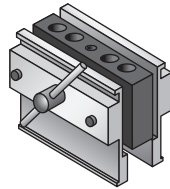
GIMLETS



When drilling just a few holes or working in tight spaces., nothing is as simple as these French Gimlets with double spirals and fluted tips that are hardened from end to end. Especially strong because they are machined not twisted. After a few twists the gimlet will effortlessly drill the needed hold.

849-3040 3mm
849-3050 4mm
849-3060 5mm
849-3070 6mm
849-3099 Set of all 4 Sizes

SELF-CENTERING DOWELING JIG



Doweling jig features automatic self-centering action to assure accurate center drilling every time, even on round objects. Two threaded holes, on 3/4" centers, accept drill bushings of 1/4", 5/16", and 3/8" (two of each included). In addition, there are two permanent drill holes in 7/16" and 1/2" sizes. Jig has a two inch capacity, and drill guides are hardened for years of use.

840-4000 Self-Centering Doweling Jig

VERITAS POWER TENON CUTTERS



Designed for cutting tenons with shoulders in round workpieces.

With such a range of sizes from 1/4" to 2" these can tackle a myriad of projects. Chair rungs, trellis and lattice work, rustic furniture, bed frames and fence post and rails. Made in Canada of anodized aluminum and balanced for vibration free usage. Each cutter has a bubble level for assuring the most accurate cutting. Additionally, they have a built-in honing guide for sharpening the blades on a drill press mounted drum sander. These tenon cutters should be used with a handheld electric drill or hand brace.

Part Number	Tenon Size	Max Depth	Shank Diameter	Shoulder Angle
860-5404	1/4"	1"	3/8"	60° Straight
860-5406	5/16"	1"	3/8"	60° Straight
860-5408	3/8"	1"	3/8"	60° Straight
860-5409	7/16"	1-3/8"	3/8"	60° Straight
860-5410	1/2"	1-3/8"	3/8"	60° Straight
860-5414	9/16"	1-3/8"	3/8"	60° Straight
860-5210	5/8"	2"	1/2"	60° Tapered
860-5212	3/4"	2"	1/2"	60° Tapered
860-5214	7/8"	2"	1/2"	60° Tapered
860-5216	1"	2"	1/2"	60° Tapered
860-5220	1 1/4"	3"	1/2"	60° Tapered
860-5224	1 1/2"	3"	1/2"	60° Tapered
860-5228	1 3/4"	3"	1/2"	60° Tapered
860-5232	2"	3"	1/2"	60° Tapered
Replacement Blades				
860-5450				for 1/4" to 9/16"
860-5250				for 5/8" to 2"





MITER TOOLS AND OLD FAVORITES

ORIGINAL GERMAN MITER CUTTER



This is an essential tool for any woodworker or tradesman who needs to cut 45° mitres in small mouldings on a regular basis. Base also has markings for cuts of 15°, 33°, and 90°. Similar to a garden shear, the built-in fence allows you to cut mitre joints quickly, easily, and with accuracy. Not only used by hobbyists, this tool has an essential place in many trades from finish carpenter to concrete former. Makes quick work of cutting shoe moulding and chamfer strip. Made in Germany.

815-1000 Mitre Cutter
 815-1050 Replacement Blade
 815-1060 Replacement Base

CARPENTERS' Mallet



Made from seasoned German beechwood and constructed in India. With 4 1/2" mortised head and tapered and non-twist grip handle the mallet has an overall length of 13"

615-1220 Mallet

"WOOD IS GOOD" Mallet



The "Wood is Good" mallet maintains the same hand grip on the wooden handle through out the range of sizes - twelve ounces through thirty ounces. A long lasting tool that does not harm the chisel handle, and is easy on the carvers hand and arm during extensive carving sessions. This is thanks to the synthetic striking surface that will absorb shock before it can get to your arm, and yet transmits the striking force to the tool. USA

170-1012 12 oz
 170-1018 18 oz
 170-1020 20 oz
 170-1030 30 oz

COPING SAW FRAME



Blade can be adjusted to any angle, providing the best approach to your work. The tension is adjusted by means of turning the handle, and the saw frame accepts standard coping saw blades with pins. A quality tool that will last for many years. Blades for both metal and wood can be found below. This nicely made tool is from Germany.

540-2000 Coping Saw Frame
 540-7500 12 Blades for Wood
 540-7550 12 Blades for Metal

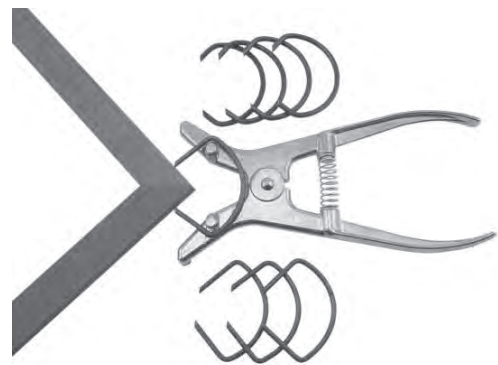
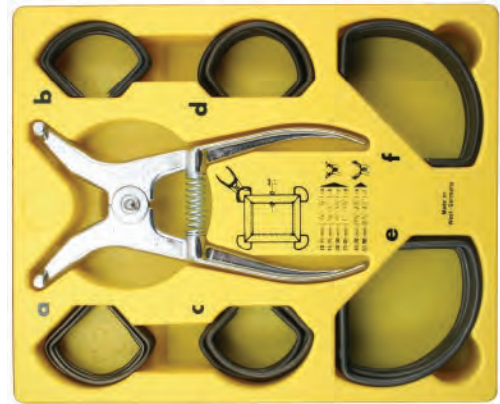
BEVEL GAUGE



Indispensable quick check for grinding and honing. Has the twelve most common angles between 15° and 120°. Comes with hole for key chain so you can keep it handy. Made in England, of solid brass, by Richard Kell.

625-3000 Bevel Gauge

ORIGINAL MITER CLAMPS



Mitered corners are one of the most difficult joints to clamp in all of woodworking. These German made clamps are made to meet the needs of carpenters, furniture restorers, boat builders, wood carvers and others with tricky clamping jobs. This very efficient mitering system is like no other clamping method because it draws the two mitered pieces together and effectively holds them together with powerful spring-like rings.

	Individual Clamps Capacity
560-3130	Clamp A 3/8" to 5/8"
560-3140	Clamp B 5/8" to 1"
560-3150	Clamp C 3/4" to 1 1/4"
560-3160	Clamp D 1" to 1 3/4"
560-3170	Clamp E 1 5/8" to 2 3/4"
560-3180	Clamp F 2 1/2" to 3 1/2"
560-3100	Application tool
560-3190	Set including 6 each of all clamps and applicator tool
560-3250	Set including 6 each of all clamps and applicator tool fitted in wooden box
560-3300	Set including 4 each of B and D clamps and applicator tool

These German clamps open by squeezing the end then apply to miter joint. Useful for small molding.



560-3050	Capacity Small 5/8"
560-3060	Large 1"

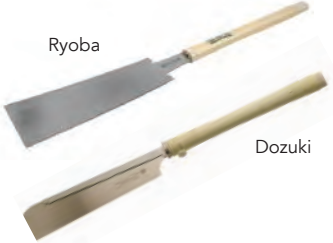


JAPANESE TOOLS

HAND SAWS



RYOBA AND DOZUKI SAWS



Ryoba and Dozuki are two traditional styles of Japanese pull saws.

Ryoba is a double-sided carpenters' saw, one side is for rip cuts, and the others side for cross cutting.

Dozuki is a one-sided saw with a stiff back used for dovetail or joint cutting featuring a thin kerf for optimal finesse.

Available with a replaceable or fixed 240mm blade.

- 720-1500 ... Ryoba with Replaceable Blade
- 720-1200 Ryoba with Fixed Blade
- 720-1505 Replacement Blade
- 720-1550 Dozuki
- 720-2200 Dozuki with Fixed Blade
- 720-1555 Replacement Blade
- Smaller versions with plastic handles and small kerf**
- 770-3500 Dozuki Saw with 7" Blade
- 770-3510 Replacement Blade
- 770-3600 Ryoba Saw with 7" Blade
- 770-3610 Replacement Blade
- 740-1010 Saw file for saws for sharpening saw with fixed blades

JAPANESE FLUSH CUTTING SAW



With a flexible blade, this saw is the perfect solution for trimming dowels and pegs, and for reaching challenging angles on any projects. The teeth are not set on the 6" blade, so they will not mar the surrounding surface area.

- 720-3000 12" Flush Cutting Saw

MARKING AWL



Mark the point where you will start to drill a hole, mark a line against a ruler, or pierce a small hole in thin material among many other uses around the shop. The tempered blade is 3 1/2' long

- 730-2000 5 1/2" Marking Awl

CARVING SETS

Carving sets for beginning carvers or those who carve occasionally but who still want good quality tools at a reasonable price. Each set contains 3/8" straight chisel, 3/8" straight edge on curved blade, 1/2" skew, 3/16" and 5/16" gouges, and 1/4" V Tool fitted on either a straight or palm handle. All blades a little over 2".

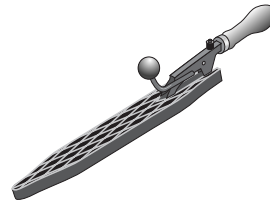


- 765-5000 Set with 3" Straight Handles



- 765-5100 Set with 2 3/8" Palm Handles

SANDER RASP



The unique shaping tool that cuts like a rasp while leaving the smooth sanded like finish. One side is coarse, the other fine fitted on comfortable plastic handle. Available with a straight, fixed head or adjustable and replaceable head.

- 745-0500 Fixed Head Rasp
- 745-0000 Adjustable Head Rasp
- 745-0001 Replacement Head for 745-0000

MIGHTY BAR



A small, thin yet strong tool for getting into hard-to-reach places for prying and a handy opening for snagging small nails. A mighty tool for many shop and home needs.

- 745-4550 7 1/2" Mighty Bar

CAT'S PAWS



A small crowbar type tool for small work or tight spaces, thanks to its slender design. Frequently used for extracting nails with its superb leverage and the V-shaped opening on each end of the tool. An ergonomic, yet delicate tool for many jobs around the shop or house.

- 745-2010 160mm
- 745-2020 210mm
- 745-2040 250mm
- 745-2060 280mm
- 745-2070 300mm

CAMILIA OIL



Long used in Japan as a rust preventative measure. Pump spray bottle for easy use. An alternative applicator is also available which allows you to daub the oil on the tool rather than spray.

- 785-9000 8 ounce Spray Bottle
- 785-9100 Applicator Bottle Only

SMALL PULL SAW



Handy and portable Japanese Pull Saw. The 3" long blade retracts into its handle for protection of blade and user when not in use. The blade is great for general work, PVC piping, and bamboo. Nicely packaged for retail by Gyokucho with information in Japanese and English. 19.5 teeth per inch.

- 720-3500 Small Pull Saw

INSULATION CUTTER



This insulation cutter answers a demand for an easy to use, inexpensive, and effective tool for the cutting of fiberglass insulation, rock wool insulation, foam insulation, and other similar materials. The tool has an extremely sharp wavy edge, straight edge, and marking edge. The hard chrome plated SK2 high carbon steel blade is 6-3/4" long and .03" thick. The blade is attached to an attractively finished hard wood handle and includes a reusable storage pouch.

- 740-5000 Insulation Cutter



SHARPENING

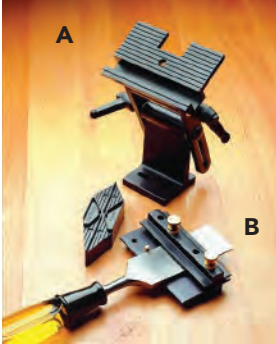
JAPANESE WATER STONES



A superior quality water stone, made to the highest Japanese specifications. These bench stones cut fast while leaving the finest edge. Start sharpening with a coarser stone then proceed progressively to finer grits. Stones need to be soaked for 30 minutes prior to use, and then they can be left in the water indefinitely so they will always be ready to go.

- Size 8-7/16" x 2-5/8" x 1-1/4"
- 705-0800 800 grit
- 705-1000 1000 grit
- 705-1200 1200 grit
- Size 8-1/2" x 3-1/8" x 1-1/2"
- 705-2000 1000x6000 double sided
- Size 7-1/4" x 2-3/8" x 5/8"
- 705-2010 6000 grit Small Finish
- Size 8-1/8" x 2-7/8" x 3/4"
- 705-2040 6000 grit Large Finish
- Size 8-1/8" x 2-7/8" x 7/8"
- 705-3000 8000 grit Gold Finish

GRINDING ACCESSORIES



This tool mounts directly to the bench in front of your 6" or 8" bench grinder (it can be readily folded out of the way). It's 4" wide table straddles up to 1" wide wheels. Perfectly suited to the Veritas grinding jig and skew grinding jig.

860-2095.....A..... Grinder Tool Rest

Clamp the tool to be sharpened in the jig adjusting the amount of blade projection you need for the bevel angle you want. Index lines ensure perfect alignment. De sign will work with virtually all hand or power grinders.

860-2085.....B..... Grinding Jig

HONING GUIDE AND ANGLE JIG SET



The Veritas honing guide has a very wide roller and is uniquely suited for adding a micro bevel after sharpening. Simply hone then turn the guide knob and give it a few more strokes. The angle jig included has the 5 most common bevel angles built into the pentagon wheel

860-3021Honing guide and angle jig

RICHARD KELL HONING GUIDE



Two wonderfully made, high quality honing guides made in England. With a refined construction featuring solid brass bobbins, a delrin roller and a stainless-steel guide rod, these honing guides allow sharpening a variety of chisels and plane irons. Made in England

- 625-5500 0 to 1" capacity with small wheels
- 625-5800 0 to 2-5/8" capacity with large wheels

HONING COMPOUND



Made from a blend of abrasives that will quickly hone steel tools (both carbon and high-speed) to a mirror finish. For use on leather wheels, leather strops and shaped wooden forms.

860-65506.5 oz Honing Compound

HONING STROPS AND ABRASIVE POWDER



"Wood is Good" tool strops come in two sizes, and enables one to put that razor edge on cutting tools. The smaller strop is perfect for most carving tools, while the larger version was designed to give the space needed to sharpen plane iron blades. Both have 'rounded' and 'V' edges for those hard-to-sharpen shapes. Sizes shown are for the strop excluding handle. USA.

- 170-4100 1-3/8" x 7"
- 170-4150 3" x 9-1/2"
- 170-4200 Abrasive (1 oz)

MK.II HONING GUIDE



860-8500



860-8510

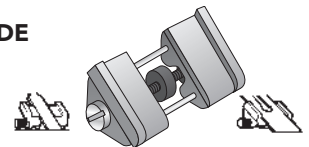


860-8520

Designed to make honing a chisel or plane iron fast with great accuracy. The blade registration system assures that the blade is square and the bevel is correct quickly and accurately. The clamping mechanism registers on the face of the blade, and is designed to accept flat and tapered blades. A three-position eccentric roller allows a microbevel to be honed easily. The tool will easily handle chisels 1/4" and blades as wide as 2-7/8" and 1/2" thick. The skew registration accessory allows you to quickly set both skew and bevel angles of chisel and plane blades, while the camber roller assembly facilitates putting a slight curve on the edge of a plane iron – desirable when using a smooth plane on large surfaces.

- 860-8500 Mk.II Honing Guide
- 860-8510 Skew Registration Jig
- 860-8520 Camber Roller Assembly

HONING GUIDE



In order to get the best performance from chisels and plane blades it is mandatory for them to be razor sharp. Sharpening requires a back and forth motion and, when holding the tool without a guide, it's impossible to maintain the same angle during this motion and impossible to know what the bevel angle actually is. This easy to use guide attaches to the cutting tool and the sharpening angle can be easily determined. With a simple rolling motion razor sharp edges are gained. When using, keep firm pressure on the cutting edge and less on the roller thus minimizing stone wear. Creating precise secondary angles are also a snap. For chisels up to 1-5/8" wide and plane blades up to 2-5/8" wide.

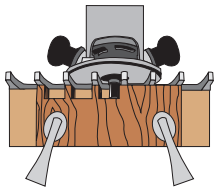
800-1800 Honing Guide



CORNERING TOOL KIT

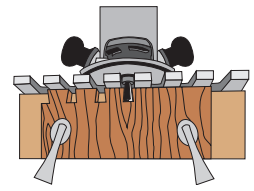
Two cornering tools giving you cuts with a radius of 1/16", 1/8", 3/16", and 1/4". Easy to use, they cut on either the push or pull stroke. Kit includes both tools and a sharpening block used with 600x silicon-car bide paper to keep the tools in great cutting condition.

860-2030 Veritas Cornering Tool Kit



KELLER DOVETAIL SYSTEM

THE KELLER DOVETAIL SYSTEM LETS YOU SPEND MORE TIME WORKING WITH WOOD, LESS TIME ADJUSTING TOOLS



Because it is engineered for people who are not engineers, the Keller Dovetail System requires only your common sense and a router to get started. You simply clamp the Keller Dovetail Templates to your workpiece, pick up your router, and start cutting. In only 2 to 5 minutes you will cut both halves of a dovetail joint. The results will be clean, precise, and snug fitting, with beautiful hand-cut proportions

LETS YOU CUT ANY WIDTH STOCK, AND VARY WOOD THICKNESSES EASILY... All models give you through-dove tail joints in any width stock. Unlike other jigs, there are no built-in stops to limit the width of your work. If your work is wider than your templates, simply slide the templates along and continue cutting. Keller gives you a consistently tight dovetail joint regardless of the wood thickness or the router bit setting. All other jigs require time-wasting readjustments and test cuts every time you change your wood thickness. In addition, you can join wood of the same or different thicknesses with the same set up.

FOR PRODUCTION RUNS OR UNIQUE HEIRLOOMS... Classic or avant-garde project, Keller gives you strength, beauty, and speed. Each of the models has preset spacing especially designed in the classic proportions of handcut dovetails. Keller gives you these distinctive dovetail joints of traditional styling.

ALL MODELS INCLUDE... Two precision templates (one only for The Journeyman models). Two carbide-tipped router bits (standard dimensions), one dovetail and one straight cutter. Two ball bearing template guides, mounted on each router bit shank. Fully illustrated instruction manual for mounting and use. Each template requires a simple wooden backing block, not included. You can vary the spacing by merely shifting the location of the templates in between cuts, changing the size of the tails or pins, while easily maintaining excellent accuracy and beautiful proportions.

JOURNEYMAN MODELS



Model 135-1500

This model is designed for joining smaller projects such as cabinets, drawers, jewelry boxes, and gift items. The double sided template comes with two router bits each with shank mounted bearings, and instructions.

Wood Width Capacity: Unlimited
Length of Templates 15"
Wood Thickness Capacity: 1/8"-3/4"
-with Rabbeted Pins: Up to 1"
Dovetail Angle: 7 degree (8:1)
Pin Spacing, center to center: 1-1/8"
Minimum Router hp Required: 3/4 hp
Router Collet Size Required: 1/4"
Shipping Weight: 2 lbs



Model 135-2200

The larger 2200 model cuts dovetails for larger furniture, cabinets, casegoods, fixtures, and chests. The double sided template comes with two router bits each with shank mounted bearings, and instructions.

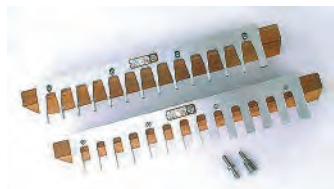
Wood Width Capacity: Unlimited
Length of Templates: 22"
Wood Thickness Capacity: 1/4"-1"
-with Rabbeted Pins: to 1 1/2"
Dovetail Angle: 7 degree (8:1)
Pin Spacing, center to center: 1-3/4"
Minimum Router hp Required: 1-1/4 hp
Router Collet Size Required: .. 1/2" or 3/8"
Shipping Weight: 3 lbs

PROFESSIONAL MODELS

The templates of all three professional versions of the Keller Dovetail System are made of aluminum and designed to be real workhorses in the professional shop and factory.

PROFESSIONAL MODEL 135-2401

Very popular mid size Keller Dovetail System model designed especially for furniture, cabinets, and casegoods. Comes with two aluminum templates, two router bits each with shank mounted bearings, and an instruction booklet.



Wood Width Capacity: Unlimited
Length of Templates: 24"
Wood Thickness Capacity: 1/4"-1"
-with Rabbeted Pins: Up to 1-1/2"
Dovetail Angle: 7 degree (8:1)
Pin Spacing, center to center: 1-3/4"
Minimum Router hp Required: 1-1/4 hp
Router Collet Size Required: .. 1/2" or 3/8"
Shipping Weight: 8 lbs

PROFESSIONAL MODEL 135-1601

This model is designed for joining smaller projects, such as cabinets, drawers, jewelry boxes, and gift items. Comes with two aluminum templates, two router bits each with shank mounted bearings, and an instruction booklet.



Wood Width Capacity: Unlimited
Length of Templates: 16"
Wood Thickness Capacity: 1/8"-3/4"
-with Rabbeted Pins: Up to 1"
Dovetail Angle: 7 degree (8:1)
Pin Spacing, center to center: 1-1/8"
Minimum Router hp Required: 3/4 hp
Router Collet Size Required: 1/4"
Shipping Weight: 5 lbs

MODEL 135-3600

This model is designed for joining smaller projects, such as cabinets, drawers, jewelry boxes, and gift items. Comes with two aluminum templates, two router bits each with shank mounted bearings, and an instruction booklet.



Wood Width Capacity: Unlimited
Length of Templates: 36"
Wood Thickness Capacity: 1/2"- 1-1/4"
-with Rabbeted Pins: Up to 1-1/2"
Dovetail Angle: 14 degree (4:1)
Pin Spacing, center to center: 3"
Minimum Router hp Required: 1-1/2 hp
Router Collet Size Required: 1/2"
Shipping Weight: 13 lbs

Bits & Bearings for the 1500 & 1601 (with diameter and carbide height)

Standard Dovetail (7/16" x 3/4")	135-1633
Standard Straight (5/8" x 3/4")	135-1643
Standard Set	135-1695
Optional Dovetail (1-1/32" x 3/8")	135-1631
Optional Straight (5/8" x 1/2")	135-1641
Optional Set	135-1690
Box Joint Bit	135-1642
Bearing for all bits above	135-7225

Bits & Bearings for the 2200 & 2401 (with diameter and carbide height)

Standard Dovetail (5/8" x 1")	135-2435
Standard Straight (7/8" x 1")	135-2445
Standard Set	135-2495
Optional Dovetail (7/16" x 3/4")	135-2433
Optional Straight (5/8" x 3/4")	135-2443
Optional Set	135-2490
Box Joint Bit	Use 135-2445
Bearing for 135-2433	135-7227
Bearing for 135-2443	135-7225
Bearing for all other bits	135-7237
Collet Adapter 3/8" - 1/2"	135-2425

Bits & Bearings for the 3600 (with diameter and carbide height)

Standard Dovetail (1" x 1")	135-3637
Standard Straight (7/8" x 1")	135-3645
Standard Set	135-3690
Optional Dovetail (1-1/8" x 1-1/4")	135-3639
Optional Straight (7/8" x 1-1/4")	135-3649
Optional Set	135-3695
Box Joint Bit	Use 135-3645
Bearing for 135-3637 & 3639	135-7249
Bearing for 135-3645 & 3649	135-7237

Dovetail System Video & Instruction Book

The Keller Dovetail System Video and Instruction Book show step-by-step demonstrations of the system's basic operation, plus an overview of its other capabilities.	
135-8000VHS
135-8500DVD
135-0026 Instruction Book